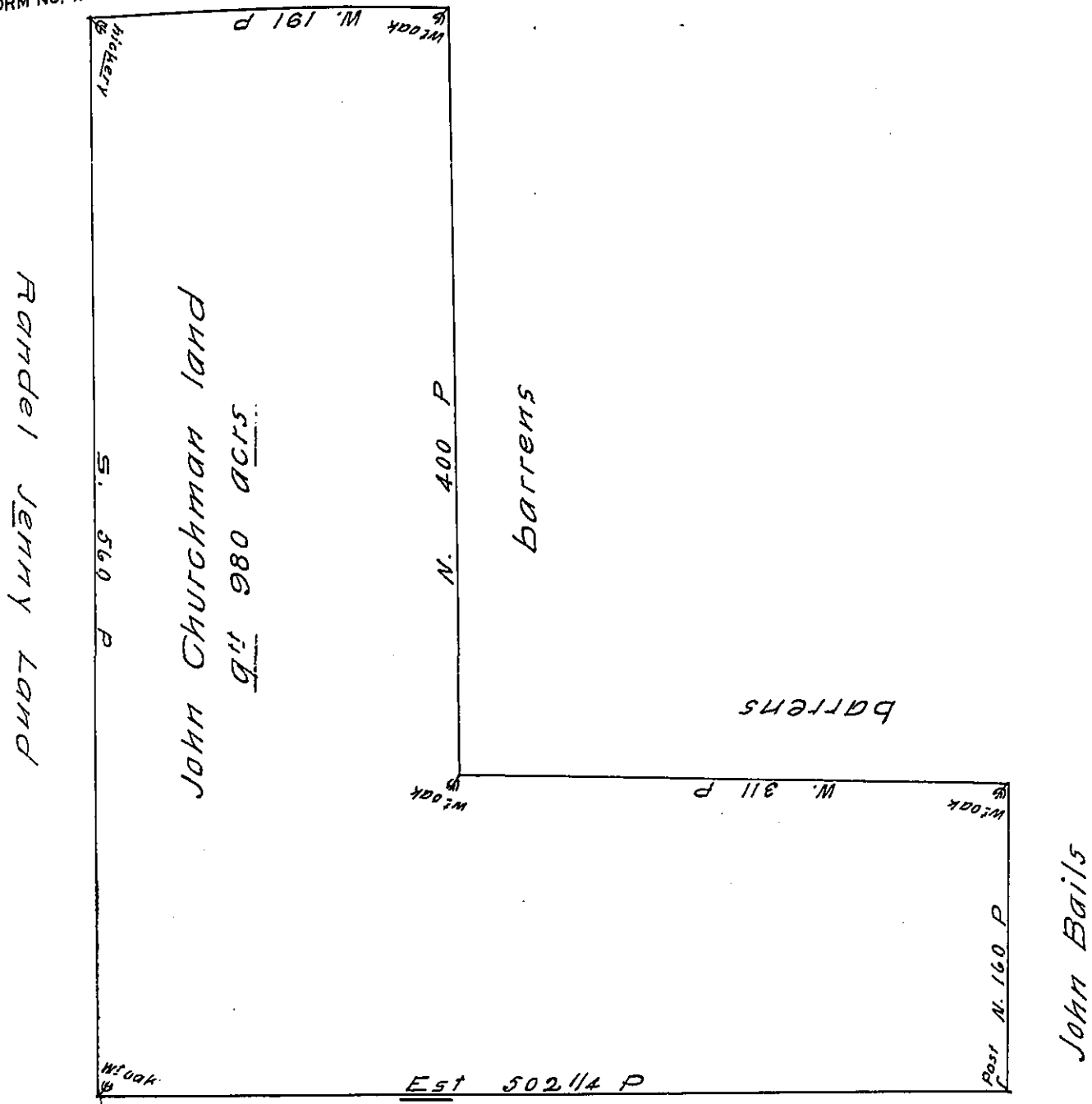


FORM No. 1.



By virtue of a Warrant to me directed dated ye 7-1-m. 1701  
 I have surveyed unto John Churchman a tract of land in Nottingham  
 beginning at a corner post of John Bails land thence North 160  
 p<sup>ch</sup> to a white oak corner tree thence west 311 p<sup>ch</sup> by the barrens  
 to a corner white oak standing on ye barrens thence by the barr-  
 ens North 400 p<sup>ch</sup> to a corner white oak thence West 191 p<sup>ch</sup> to a  
 corner hickery thence by Randel Janny land South 560 p<sup>ch</sup> to a  
 corner white oak thence Est 502 1/4 p<sup>ch</sup> to the place of beginning  
 containing 980 acres of land the 16-3-m. 1702

Henry Hollingsworth

IN TESTIMONY that the above is a copy of the original remaining on file in  
 the Department of Internal Affairs of Pennsylvania, made  
 conformably to an Act of Assembly approved the 16th day of  
 February, 1833, I have hereunto set my Hand and caused  
 the Seal of said Department to be affixed at Harrisburg,  
 this twenty second day of April 1910

Henry Honck

Secretary of Internal Affairs.